

# PUBLISHING SCHEDULE

Luxury Home Magazine is printed 6x a year with readership of 232,000 Magazines every issue during a 2 month cycle. Complimentary copies for personal marketing.



## SPRING ISSUE

FEBRUARY/MARCH  
ISSUE 16.1

SIGNATURE SECTION  
Power Players

ADVERTISING DEADLINE  
January 9

AD MATERIALS DUE  
January 12

CIRCULATION (APPROX)  
February/March



## SPRING TOUR OF HOMES ISSUE

APRIL/MAY  
ISSUE 16.2

SIGNATURE SECTION  
Spring Tour

ADVERTISING DEADLINE  
March 6

AD MATERIALS DUE  
March 9

CIRCULATION (APPROX)  
April/May



## SUMMER ISSUE

JUNE/JULY  
ISSUE 16.3

SIGNATURE SECTION  
Ranch Section

ADVERTISING DEADLINE  
May 8

AD MATERIALS DUE  
May 11

CIRCULATION (APPROX)  
June/July



## ANNIVERSARY ISSUE

AUGUST/SEPTEMBER  
ISSUE 16.4

SIGNATURE SECTION  
New Construction

ADVERTISING DEADLINE  
July 10

AD MATERIALS DUE  
July 13

CIRCULATION (APPROX)  
August/September



## FALL TOUR OF HOMES ISSUE

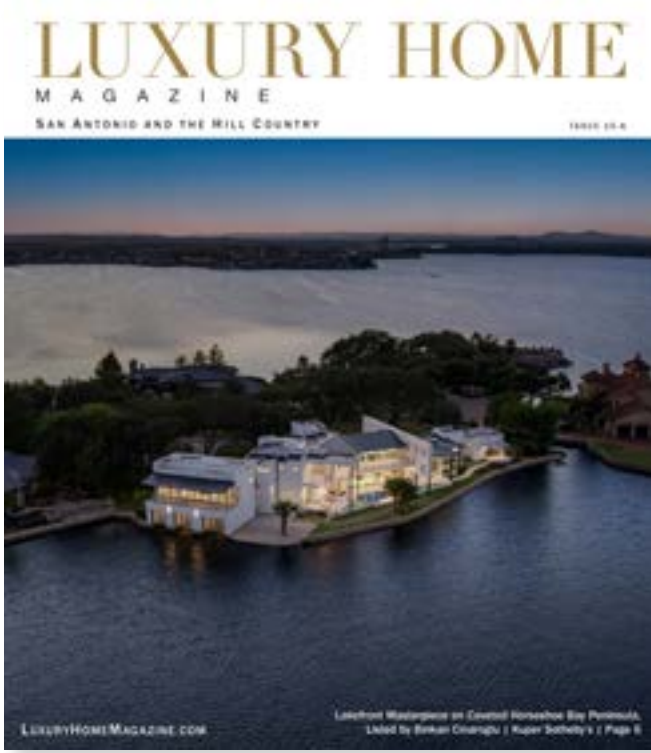
OCTOBER/NOVEMBER  
ISSUE 16.5

SIGNATURE SECTION  
Holiday Issue

ADVERTISING DEADLINE  
September 4

AD MATERIALS DUE  
September 8

CIRCULATION (APPROX)  
October/November



## HOLIDAY ISSUE

DECEMBER/JANUARY  
ISSUE 16.6

SIGNATURE SECTION  
Holiday Issue

ADVERTISING DEADLINE  
October 30

AD MATERIALS DUE  
November 2

CIRCULATION (APPROX)  
December/January 2027

Approximate circulation dates are subject to change (earlier/later) depending on a variety of factors, including printing, weather and holidays.